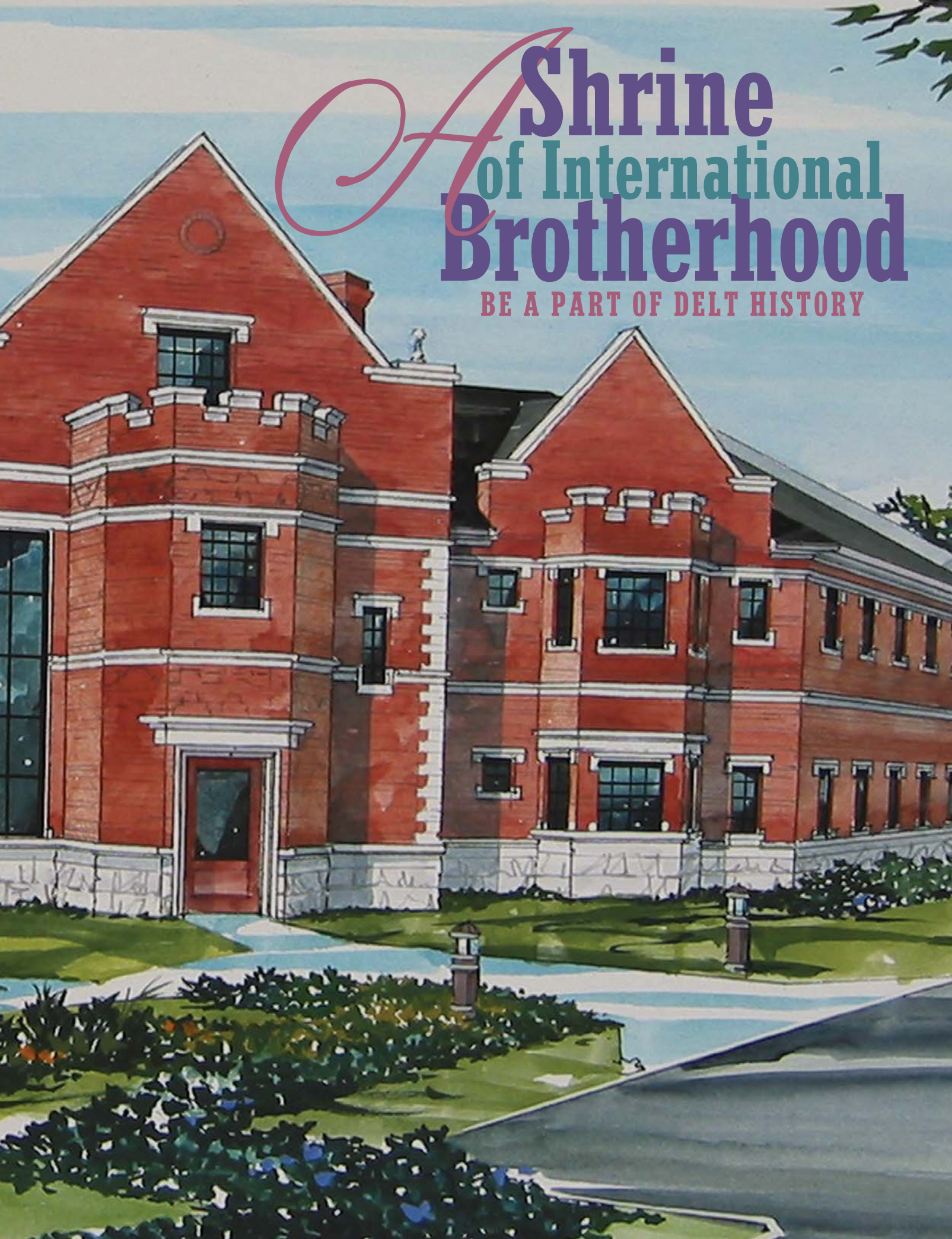


A Shrine of International Brotherhood

BE A PART OF DELT HISTORY



“We have been charged with the awesome responsibility of finding a permanent home for a great 150-year-old, but still growing, fraternity. We were most fortunate to find an ideal answer to space requirements, well located, outstanding construction, parking, with plenty of room to grow—all within financial requirements. The Central Office administrative staff and the Educational Foundation will enjoy the additional space that will promote more efficient and effective leadership. The Arch Chapter and various committees will have ample meeting facilities. To house our treasured records and memorabilia. We are indeed fortunate to find a first-class facility like 10000 Allisonville Road. I am extremely pleased to have worked with a great committee and staff to complete the initial part of this task. I ask all of you to now join us in completing this historic campaign.”



JOHN FISHER, CAMPAIGN CHAIRMAN
UNIVERSITY OF TENNESSEE, 1938



Headquarters Campaign Leadership

JOHN W. FISHER
Honorary Chairman

DAVID B. HUGHES
General Chairman

HEADQUARTERS STEERING COMMITTEE & FOUNDATION BOARD OF DIRECTORS

Norval B. Stephens ■ Charles E. Bancroft ■ Richards D. Barger ■ Bryan C. Barksdale ■ Murray M. Blackwelder
Carl R. Brantley ■ Dennis A. Brawford ■ John A. Brock ■ Thomas F. Calhoun, II ■ Dr. Robert F. Charles, Jr.
Kenneth L. Clinton, Jr. (Rock) ■ Merlin E. Dewing ■ Richard H. Englehart ■ John W. Fisher
Kent R. Hance ■ Donald G. Kress ■ David L. Nagel ■ John W. Nichols ■ Thomas L. Parker
Travis Rockey ■ Dr. Robert E. Roush, Jr. ■ Gilbert D. Standley ■ G.L. “Jidge” Verity
Alan Bracket ■ James H. Bowersox ■ James W. Garboden ■ Edwin L. Heminger ■ James P. Kappel
Keith J. Steiner ■ James R. Wallen

FOUNDATION STAFF

Kenneth A. File, President ■ Sonya R. Gill, Chief Financial Officer
Brett C. Dyess, Campaign Director ■ John A. Mainella, Annual Fund Director
Mary Steeb, Administrative Assistant ■ Cynthia Frank, Administrative Assistant

The Foundation is an Indiana not-for-profit corporation, tax identification number 31-1020203.



“To administer Fraternity business and provide a repository for important documents and records.” That sentence taken from the Arch Chapter minutes in the fall of 1912 led to the creation of what we have come to know today as the Delta Tau Delta Central Office and the offices of the Educational Foundation. This experiment for centralizing services for the purpose of “relieving the officers of the Arch Chapter of their detail and routine work” has led to a committed staff of more than 25 men and women who administer a budget in excess of \$2 million dollars annually and provide more than 120 different types of services and publications.

With nearly 90 years of history, the Central Office has borne witness to the Delt experience stretching across world wars, social conflicts and campus challenges.

For the past 20 years, Delta Tau Delta has had a partner in promoting the Delt experience in the Delta Tau Delta Educational Foundation. Through the Foundation’s efforts in educational programming, Delta Tau Delta is a better Fraternity today. This is most evident through the recent successful completion of a \$9.6 million capital campaign to fund our marquee programs such as the Delta Tau Delta Leadership Academy, Delt Talking About Alcohol, the Chapter Consultant Program and Values Training Education.

Your Fraternity, with the assistance of our alumni, is meeting the challenges of the current college campus with an eye on the future—always putting the undergraduate experience first.



Our next opportunity:

As an extension of this commitment, a significant review has been done of the Fraternity’s business operations. It has become apparent that an increasing percentage of the Fraternity’s budget is going toward leasing space for an expanding staff that is supporting the operations of the Fraternity. In 1996, the Fraternity and Foundation received an exceptional rental arrangement due to an unusual opportunity to sub-lease space in a premium office building on the north side of Indianapolis. This business decision allowed us to cut office rent by nearly 50 percent.

In November 2000, the favorable lease arrangement that the Fraternity and Foundation had been receiving expired, doubling our costs to more than \$120,000 a year for rent.



A few previous Fraternity Offices from 1913 to 1996. Since its creation, the Central Office has moved locations 13 times.



Our proud heritage

Planning for the future while respecting the past



Retain more resources under our control

A sound business decision



In 2008, Delta Tau Delta will be 150 years old. Founded in 1858, Delta Tau Delta had humble beginnings with little interest in expanding to other campuses. However, our motto and mission were of such solid character, it quickly spread to other campuses and today, more than 140,000 initiates have taken the oath of membership.

Among those men are United States vice presidents, Supreme Court justices, Nobel laureates, university presidents, Fortune 500 CEOs and leaders on almost every professional frontier, whether it be outer space, medical research or the deepest depths of our planet's oceans.

Our alumni are leaders in business, law, education, politics, information technology, engineering, religion and the arts. It is hard to find a profession that a Delt has not helped shape. Many have risen to the top of their fields of endeavor. Since 1966, more than 175 men have been honored as recipients of the Fraternity's Alumni Achievement Award for Excellence in their professions.

Our alumni also have a history of involvement with Delta Tau Delta. These men have served their Fraternity as volunteers in capacities as chapter advisors, house corporation officers, division vice presidents and members of the Arch Chapter. Their unselfish service above self to furthering the motto of Delta Tau Delta serves as an inspiration to our young people and helps to fulfill our prophecy of future growth and greatness.

We are a great Fraternity not because of a great Arch Chapter or Central Office, but because we have great chapters at first class campuses. Great leadership at the national level is a reflection of the success of our local chapters. All Deltas can be proud of our chapters' accomplishments on the various campuses where they hold the Delt banner high as a recognized leader for academic excellence and service to their various communities.

As we approach our 150th anniversary, it is important to look back to understand what has made us great. In almost every action, regardless of the time period, decisions have been made with this overriding point:

"Is this the best utilization of resources available to assist the greatest number of undergraduates to achieve the highest level of excellence?"

The driving pursuit of this goal has led Delta Tau Delta to review constantly operations to make sure we are getting the best value from our collective Delt Dollar.

In November of 1999, the Fraternity approached the Delt Foundation indicating an interest in leasing space from the Educational Foundation as a part of an overall decision of the Foundation to invest part of its assets in real estate.

With the growth and success of the Foundation's programming, it will be necessary for the Foundation to secure additional space as well as diversify its investments to include real estate. Through mutual negotiations, it was determined that a facility could be purchased and in turn, a portion of the space leased to the Fraternity at market rates. These rental payments, would create a market return on investment that the Foundation could invest in educational programming. In essence, why should the Fraternity and Foundation be paying rent to a third party landlord when we could retain that investment of rent paid by undergraduate dues and, after expenses, return it in a form that could be used for educational purposes in accordance with the Foundation's mission?

The logic made sense, but rather than using current assets of the Foundation which would take away from current programs, we have launched a capital campaign for a headquarters effort to bring new money to the Foundation that might not otherwise be invested for such a purpose.

We have studied the needs and desires of the current headquarters staff and the technological advances that would be necessary to keep Delta Tau Delta on the cutting edge of providing high quality service to our undergraduates. The emphasis in this new headquarters for the future will be to provide Class A office space and access to cutting edge technology.

Appropriate architecture has been selected that is timeless in its beauty and marketability should resale of the property be necessary. The board's aim is a high quality, durable facility that will provide for the needs of the Fraternity and the Foundation for the next 50 years.

An appropriate facility has been located. It is a first class facility of light commercial brick construction built on the northeastside of Indianapolis. We have been able to secure the buildings and 3.3 acres of ground at a cost of approximately \$2.7 million. A review of the plans will show the meticulous planning by your Foundation board to make sure this is a sound business decision while, at the same time, respecting the heritage and history of the Fraternity. The English Tudor design is reflective of collegiate gothic architecture of some of the most beautiful college buildings on the campuses where the Fraternity has chapters.

timeless beauty

"To retain more control over expenses and to take advantage of tax savings in the State of Indiana, the reasons for leasing space have finally been outstripped by ownership.

With the expanding services being provided by both the Fraternity and Foundation, the need for additional space has become apparent. It makes little sense to be paying those dollars to someone else when they could be retained by the Foundation.

In addition, while the Fraternity and Foundation continue to lease space, it cannot take advantage of the fact that it is exempt from property tax in the State of Indiana.

The need for a permanent structure for Delta Tau Delta is readily apparent. The structure that is proposed will be approximately 19,000 square feet on two levels with additional space for storage, a training facility and room for expansion in an adjacent 6,000 square foot building connected by walkways forming a center courtyard. The facility is built in a manner that is in keeping with the national character of Delta Tau Delta, while at the same time being a facility that can be marketed and sold in the future, should the economies of ownership reverse themselves."

— KENNETH A. FILE, PRESIDENT
DELTA TAU DELTA EDUCATIONAL FOUNDATION
KANSAS STATE, 1981

“After nearly 150 years, our great Fraternity finally will have a permanent home to conduct fraternity business, archive Delt history and an opportunity to put the rent we have been paying toward undergraduate programming. Purchasing the Fishers site is a winner all the way around for Delta Tau Delta”

TRAVIS ROCKEY
UNIVERSITY OF FLORIDA, 1973
FOUNDATION DIRECTOR

Your new headquarters building

“It was a stroke of good fortune to find a completed building right in the area where we were looking but designed to function as the headquarters of a high-technology company. But, isn't that what Delt is? Every chapter connected by the Internet. Every alum being added as we get an e-mail address. Every officer and chapter advisor and house corporation linked. But, these are only characteristics, not the soul of Delta Tau Delta. That is still enshrined in our Creed. We have just found a better way to manage its delivery to 6,000 undergraduates and to our 70,000 alumni.

In recent years, our alumni have told us to bring the finest programs we could to our undergraduates in the areas of chapter management, leadership development through our Leadership Academies and to address the serious issue of alcohol abuse through our Deltas Talking About Alcohol. In other words, the young men come first. Now, they have told us it is time to put our headquarters into suitable and permanent housing and to bring our archives, training facilities, e-tech skills and management together for greater service to both undergraduates and alumni.”

NORVAL STEPHENS, CHAIRMAN
DELTA TAU DELTA
EDUCATIONAL FOUNDATION
DEPAUW UNIVERSITY, 1951

The main floor will feature Founders Hall—a two-story 30-foot cathedral entry for the Foundation and Fraternity. In this area you will find portraits of the Fraternity's Founders. This impressive hall will make every Delt feel a part of our 150 years of heritage. Also on this floor you will find The Presidents Boardroom, a Museum and Archives as well as the Member Service offices of the Fraternity.

The second floor will house the main offices of the Educational Foundation and the business affairs division and executive offices of the Fraternity. Sufficient conferencing areas and cutting edge technology will be located throughout the building.

Other features of the main building will include:

- Two conference rooms
- Grand staircase
- Two fireplaces
- Solid wood doors and trim
- Custom lighting and controls
- State of the art data, voice and security systems throughout

Features of Leadership Conference Wing:

- Dedicated leadership training center
- Beautiful central courtyard
- State of the art Foundation call center
- Chapter archives and storage
- Break room and restrooms able to service building and conference wing
- Adequate parking for 89 vehicles



museum and archives

Early in the planning of the new Foundation and Central Office Headquarters, it was determined that areas should be set aside to display the beautiful artifacts that have been collected by the Fraternity over the past 150 years. Due to our desire to minimize rental costs we have rarely had the space to display these materials.

This valuable history will be on display for Deltas to see and is comprised of:

- Original Manuscripts by the Founders
- Unusual and One-of-a-Kind Badges
- A Unique Display of Deltas in Wartime
- Growth and Expansion of the Fraternity
- Leaders of Industry, Education, Medicine, Religion and the Arts
- Artifacts from Chapters
- Karnea Photo Gallery
- Extensive Photo Display of Significant Fraternity Events
- Karnea Audio and Video Tape Collections

10000 Allisonville Road

The challenge of the project is extraordinary, but the benefits of success hopefully will capture your imagination.

Your Foundation and Fraternity office will:

- Return 10% of our investment annually back to the Foundation from the Fraternity's rent to support qualified educational programs.
- Allow alumni a source of pride and to reconnect with the history and the heritage of Delta Tau Delta.
- Provide cutting edge technology and position Delta Tau Delta as the technology fraternity of the future.
- Provide adequate meeting space to host Leadership Academies, chapter retreats and workshops, Arch Chapter and Foundation board meetings.
- Provide a more functional central repository and display for the historical archives.
- Eliminate the disruption of operations of an ever-growing organization every five years to secure competitive rental rates.
- Allow alumni the opportunity to invest in a permanent home for Delta Tau Delta and create a source of pride for future generations of Deltas.

It is time

Delta Tau Delta has never had a permanent home of its own and has existed in either leased space or converted residences since the Central Office was created in 1913. That strategy has served us well, but now it is time to invest in ourselves and own a facility that represents the durability and permanence of our 150-year history.

“Hugh Shields would have been pleased.”

JOHN FISHER
UNIVERSITY OF TENNESSEE, 1938



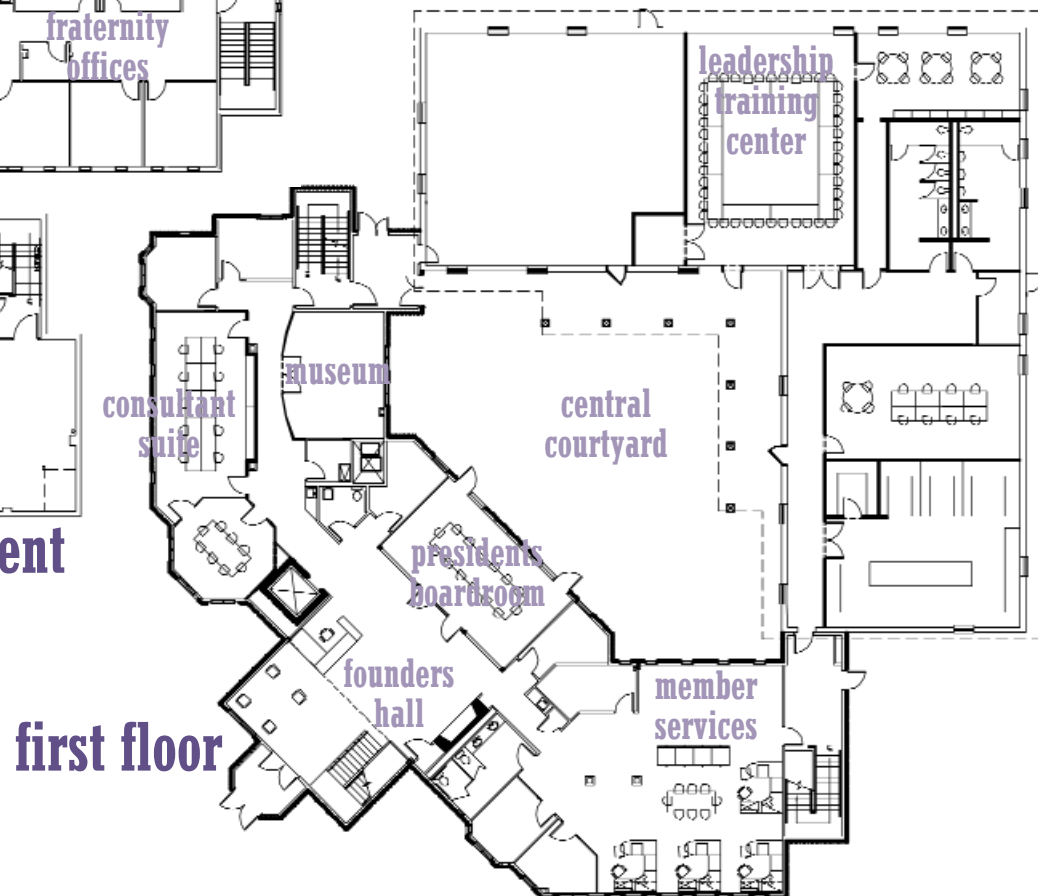
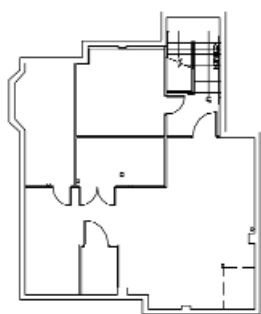
Honoring the service of Eugene B. Hibbs, Kenneth C. Penfold, John W. Fisher, Albert J. “Bud” Murphy

Leadership Conference Center Design Concept

One of the showpieces of the new Delt headquarters will be our Leadership Conference Center. The room will honor the service and contributions of former Chapter Consultants Gene Hibbs, Ken Penfold, John Fisher and Bud Murphy. These four men represent the spirit of lifelong service and friendship that are emblematic of what we try to teach our young undergraduates. Naming this room for these four men will provide true-life models of what a life of excellence can accomplish.

Flexibility will be key to this environment and include potential small meeting environments. Eight identical tables, each seating six people, can be arranged in different configurations for formal or informal training or meeting situations.

Paneled screen covers move to expose a variety of presentation surfaces. Acoustical drapes provide a warm effect to the room but can be opened to reveal additional presentation surfaces from tack flipcharts to brainstorming story-boards. The facility will accommodate cutting edge technology for a variety of educational seminars, values education training and sessions of the Leadership Academy as well as accommodate Board Meetings.



Chapter Archives

In addition, many chapters will be celebrating significant anniversaries and beginning fundraising efforts in the next several years. It is the goal of the Educational Foundation to provide a central repository to collect this important research material for these projects and to preserve them in a manner that can be shared with future generations for these individual chapters.

Much of your chapter's history is being lost, one alumnus at a time or during chapter reversals or in the worst-case, chapter fires. As families clean attics, they unknowingly pitch valuable Fraternity and Chapter history.

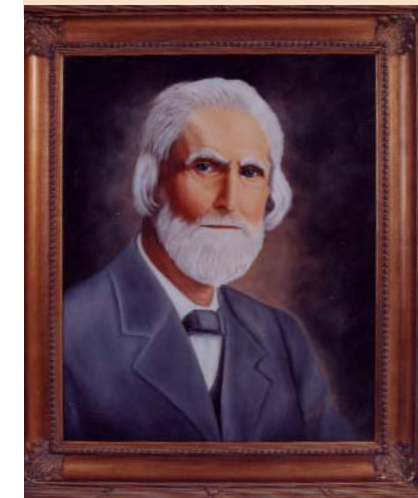
As a part of this campaign, we are asking all alumni to send this material to the headquarters. It is earnestly being sought and will be lovingly preserved.

Presidents Boardroom

The tradition of the Presidents Boardroom was created when the Fraternity moved to its first owned building in the summer of 1953, at 3242 North Meridian Street in Indianapolis. The tradition was slowly lost as the Fraternity moved into three different office buildings during the course of the last 30 years. The central feature of the Boardroom will be framed portraits of every president of Delta Tau Delta, as well as other display cabinets of mementos and artifacts from former presidents.

Members Room

An office away from home, this room, located just off the lobby, will provide alumni travelling through Indianapolis a place to rest, make a few phone calls and keep up with their hectic office schedules. This room will also double as a receiving room for small meetings with alumni and undergraduates.



Founders Hall

As you enter the new headquarters you are greeted by a soaring 30-foot atrium dominated by eight portraits of the Fraternity's Founders. Comfortable seating is provided throughout forming a very inviting reception and open meeting area. Over the fireplace will hang a print of Old Main, the administration building of Bethany College, honoring the founding institution of our great Fraternity.

Founders Hall will be dedicated to the great leaders of the Fraternity, past, present and future.

“Since the Central Office was established early in the century, it has moved from one location to another, primarily in leased quarters. The ownership of our own Delta Tau Delta office provides us a real, long-term home wonderfully fitted to our ongoing needs. This gives a newfound added identity to our Fraternity.”

ED HEMINGER, FORMER INTERNATIONAL PRESIDENT, DELTA TAU DELTA OHIO WESLEYAN UNIVERSITY, 1948



Your place in our history

In the early stages of our project, the gifts and pledges of many generous brothers totaled nearly \$2,300,000. Now we need you to step forward with a gift demonstrating your commitment to this once in a lifetime opportunity—to record your name permanently on the walls of our Shrine of International Brotherhood.

Our undergraduates understand the importance of this effort and have already pledged over \$100,000 to help with the furnishings of the Fraternity. They are dedicated to this effort and are asking you to join them.

The alumni, along with our undergraduates, must pull together for this major undertaking that will allow us to bring action to our campaign theme “A Shrine of International Brotherhood.” Your participation is absolutely vital to the continued success of Delta Tau Delta.

You are the only one who can place a value on your Delt experience—on the lifelong friendships you made, the influence it had on your values and principles. Every chapter has had its experience touched by the International Fraternity. For 90 years, the Central Office has held the line and made do with barely adequate offices so that all resources could be kept in the field helping our undergraduates.

It is now time that we make the offices of the Fraternity and Foundation a place and a destination that celebrates our intergenerational Delt experience.

The following early contributors ask you to join them in supporting this historic project.

This list is current as of March 8, 2002. Updated listings will appear in each subsequent issues of the magazine.

\$250,000 and above

Mr. & Mrs. John W. Fisher
O. K. Johnson, Lawrence 1952
John G. Nichols, Indiana 1940
Norval Stephens, DePauw 1951

\$100,000 to \$249,499

John W. Nichols, Oklahoma 1936

\$75,000 to \$99,999

\$50,000 to \$74,999
John W. Gleeson, Illinois 1968
Edwin L. Heminger, Ohio Wesleyan 1948
Gerald A. Kolschowsky, Iowa State 1961

\$25,000 to \$49,999

Robert W. Archer, IIT 1960
Carl O. Brantley, Georgia Southern 1975
Dennis A. Brawford, Washington 1961
Jeff Heatherington, Willamette 1965
Robert E. Kraft, Ohio 1961
Donald G. Kress, Lafayette 1958
Travis O. Rockey, Florida 1973
C. Richard Stark, Iowa State 1971
Gilbert D. Standley, DePauw 1982
Southern Division Chapters
Western Plains Division Chapters

\$15,000 to \$24,999

Anthony C. Caputo, Arizona 1989
Kenneth F. Murphy, Ohio Wesleyan 1956
Silas B. Ragsdale, Jr., Texas 1948
Charles E. Safris, Iowa State 1963
Wayne A. Sinclair, West Virginia 1968
Northern Division Chapters

\$10,000 to \$14,999

W. Walker Alexander, III, Georgia Southern 1996
Alan G. Brackett, Tulane 1982
Tyrone M. Bridges, Georgia 1966
Thomas F. Calhoon, Ohio State 1970
Daniel A. Dungan, Texas Tech 1979
Richard H. Englehart, Indiana 1947
Kenneth A. File, Kansas State 1981
Kenneth R. Glass, Indiana 1976
Roy O. Gromme, Wisconsin 1957
Kerry B. Harding, Ball State 1982
David B. Hughes, Ohio Wesleyan 1961
Travis O. Rockey, Florida 1973
James B. Russell, Purdue 1975
Adam I. Skolnik, Florida 1997
Rupert D. Starr, Ohio 1946
Craig S. Scholl, Syracuse 1982
Keith J. Steiner, Allegheny 1973

Tulane (Beta Xi) House Corporation
Jidge Verity, Oklahoma 1970

\$5,000 to \$9,999

Phil R. Acuff, Missouri 1953
Charles E. Bancroft, Miami (Ohio) 1950
Richards D. Barger, Indiana 1950
Kenneth L. Clinton, Jr., Texas A&M—Commerce 1965
Charles R. Cruse, Butler 1939
Blaine H. Loudin, Cincinnati 1952
Mark E. English, DePauw 1964
William A. Gage, Sam Houston State 1961
Ron P. Mafrige, Sam Houston State 1960
Charles T. Mallery, Sam Houston State 1959
Wade L. Neal, Purdue 1943
Perry R. Swanson, Pittsburgh 1955
Gary L. Whitlock, Sam Houston State 1971
R. Tracy Williams, Sam Houston State 1973
Eastern Division Chapters
Western Pacific Division Chapters

\$2,500 to \$4,999

Scott W. R. Bates, Ottawa 1995
Murray M. Blackwelder, Baker 1969
Morrie A. Bunnell, Ball State 1990
James H. Bowersox, USC 1951
James D. Carey, Sam Houston State 1961
Brett C. Dyess, Georgia Southern 1994
Garth B. Eberhart, Wabash 1992
Matthew M. Frazier, Eastern Michigan 1996
James W. Garboden, Pittsburgh 1988
Jeffrey A. Hammond, Purdue 1995
John A. Hancock, Whitman 1987
James T. Hise, Kansas State 1989
Kevin R. Johns, Allegheny 1994
James P. Kappel, Bradley 1987
Gregory N. Kazarian, Illinois 1984
Daniel L. Lindstrom, Nebraska 1982
Christer D. Lucander, Tufts 1979
David L. Nagel, Iowa State 1963
John R. Nelson, Jr., Washington 1942
G. Michael Perros, Kentucky 1980
Albert H. Roper, Sam Houston State 1963
Robert E. Roush, Jr., Sam Houston State 1964
W. Stanley Telford, Jr., Arizona 1987
James R. Wallen, Colorado State 1993
Kelly M. Wenz, Kansas State 1995

\$1,000 to \$2,499

James B. Barkate, Tulane 1978
Kurt E. Beran, Nebraska—Kearney 1999
Jeffrey M. Chrisman, Idaho 1996
Keith A. Dziki, Kent State 1998
Sid, Joni & Kyla Gonsoulin
Christopher M. Goodman, Arizona 1998
Michael T. Goodman, Tulane 1980
David R. Gordon, Tulane 1985

Daniel M. Henderson, Washington State 1996
Sean M. Houston, Kent State 1998
George P. Koclanes, Jr., Tulane 1985
Steven W. Leland, USC 1985
Joseph H. Langhammer, Jr., TCU 1966
Chris W. Lorenz, Nebraska 1998
Andrew P. McDevitt, Emory 1992
Jeremy J. Nelson, Nebraska—Kearney 1997
Charles G. Pona, Bowling Green 1982
Nicholas E. Prihoda, Wabash 1999
J. Jeffrey Rand, Maine 1982
Harry R. Richardson, Pittsburgh 1960
James O. Selzer, Baker 1970
Kevin C. Snyder, UNC—Wilmington 1998
William K. Troha, Clemson 1995
E. Peter Urbanowicz, Jr., Tulane 1985
James C. Wisbrock, Missouri 1997
John W. Wood, Jr., South Dakota 1968
Jason B. Worley, Colorado State 1996

\$500 to \$999

Gil Borok, Pittsburgh 1990
Kenneth W. Brooks, Arizona 1969
William G. Cooper, Illinois State 1998
Bryan J. Cox, Ball State 2000
Jeffrey A. Desserich, Colorado State 1999
Joseph E. Fleischmann, Jr., Oregon 2000
Andrew J. Hafner, North Dakota 2000
Frank B. Heath, Sam Houston State 1961
D. Mark Helmus, Ohio 1986
Neil A. Huffman, Pittsburgh 1953
Perry A. Hurth, North Dakota 2001
Jeffrey C. LaFuria, Pittsburgh 1988
Lanny D. Lautenschlager, Nebraska—Kearney 2001
Jeffrey B. Leech, UNC—Wilmington 1990
John A. Mainella, West Virginia 1999
Christopher J. Martz, Wabash 1994
P. Christopher Mickel, Ball State 1995
Randy C. Mickle, UNC—Wilmington 2001
Alexander M. Minno, Pittsburgh 1944
John C. Nowell, Texas—Arlington 1970
Sean J. O'Callaghan, San Diego 1998
William A. Onofry, Moravian 2001
Craig A. Penfold, Colorado 1965
Mrs. Ken Penfold
Jason S. Watters, Florida 1999
Jacob C. White, Northern Arizona 2001
Joshua A. Williams, Quincy 1998

\$50 to \$499

Orlin R. Camerlo, Northern Colorado 1997
William H. Eells, Ohio Wesleyan 1946
James P.A. FitzGerald, Wisconsin 1985
Rodney L. Folschinsky, Sam Houston State 1963
Joseph R. John III, Tulane 1981
Robert E. Johnson, Sam Houston State 1964
Jordan J. Parrish, Washington State 2003

Headquarters Honor Roll

“Leaving a legacy is what life, the Fraternity and this special campaign is all about.”

MURRAY BLACKWELDER
BAKER UNIVERSITY, 1969
FOUNDATION DIRECTOR



Named gift opportunities

It has been decided that significant areas of the building would be available for naming opportunities. The following is an initial list. Your family, or pledge class may wish to do something special or several brothers might join together to have a special named gift made:

Highlighted gifts in yellow indicate commitments already pledged or paid.

GIFT	AMOUNT
Leadership Training Center	\$500,000
Museum and Archives	\$400,000
Chapter Consultant Suite	\$350,000
Foundation Wing	\$250,000
Founders Hall	\$250,000
Bethany Society (20 new members)	\$250,000
Founders Portraits (\$30,000 each)	\$240,000
Central Office Wing	\$150,000
Presidents Boardroom	\$100,000
Calling Center	\$100,000
Central Courtyard	\$100,000
Lamp Posts (\$10,000 x 8)	\$80,000
Break Room	\$75,000
Chapter Archives	\$50,000
Armed Services Window (Stained Glass)	\$50,000
Foundation Window (Stained Glass)	\$50,000
Heritage Society Display	\$50,000
Second Floor Executive Conference Room	\$50,000
Fraternity Conference Room	\$50,000
DSC Display	\$50,000
Arch Chapter Display	\$50,000
Bethany Society Display	\$50,000
Order of The C___ Display	\$50,000
Al Sheriff Portrait	\$50,000
Fraternity Executive Vice President Suite	\$50,000
Foundation President Suite	\$50,000
Mission and Values Plaque	\$30,000
Exterior Flag Display	\$30,000
Foundation Chairmans Display	\$30,000
Small Conference Room	\$30,000
Wall of Honor (in Courtyard)	\$25,000
Members Room	\$25,000
Memorial Display	\$25,000
Hugh Shields Display	\$20,000
Annual Fund Display	\$20,000
Historical Timeline	\$20,000
Bethany House Miniature	\$20,000
Old Main Portrait	\$20,000
Columns Truth	\$12,500
Courage	\$12,500
Faith	\$12,500
Power	\$12,500
Aspiration	\$12,500
Self-Control	\$12,500
Honor	\$12,500
Loyalty	\$12,500
Understanding	\$12,500
Brotherly Love	\$12,500
Individual Gifts	
Trees (\$1,000 x 25)	\$25,000
Bricks (\$250 x 1,000)	\$250,000

Methods of giving



In order to allow major gifts to be tax deductible to the donor, all gifts must be made to the Delta Tau Delta Educational Foundation. The Delta Tau Delta Educational Foundation is a charitable 501(c)(3) organization. Contributions to it are tax deductible to the extent allowed by law.

All donors are encouraged to provide early and generous support. Gifts may be made over a five-year pledge period. You will be mailed payment reminders. The early collection of gifts will reduce borrowing costs associated with the project and allow it to be completed in its entirety. Some donors may find that they are able to enhance their giving capability by making gifts of appreciated securities. Gifts of appreciated stock often provide a significant tax advantage to the donor.

This campaign may also accept in-kind support on a case-by-case basis, within certain established guidelines.

Project Budget

Acquisition Cost of Building and Grounds	\$2,700,000
(Includes all closing costs and fees)	
Renovation of Leadership Wing	\$ 280,000
(Replace roof and all exterior siding and reconfigure Interior walls and finishes)	
Financing	\$ 80,000
(Interim bank financing to secure property and complete renovation work prior to occupancy)	
Furniture and Equipment	\$450,000
(New telephone system, upgraded computers and furnishings throughout)	
Acquisition and Renovation Cost	\$3,500,000
Building Endowment	\$1,000,000
(Establish a permanent fund for repairs, maintenance and capital improvements)	
Total Campaign Goal	\$4,500,000
Early Gifts and Commitments	(\$2,300,000)
Remaining Campaign Goal for Alumni	\$ 2,200,000



Letter of intent



To The Trustees of Delta Tau Delta Educational Foundation:

I am pleased to join with others in support of the Delta Tau Delta Educational Foundation's campaign, "A Shrine Of International Brotherhood," by expressing my intention to make a contribution of \$ _____.

I wish to designate the following as the recipient of my contribution:

- Leadership Training Center
- Chapter Consultant Suite
- Foundation Wing
- Museum and Archives
- Central Office Wing

My contribution is undesignated

Gifts toward this commitment will be made as follows:

- One time gift of cash, securities or planned gift
- Payment for this year of \$ _____,

with the balance to be paid over the next four years as follows:

\$ _____ 200__
 \$ _____ 200__
 \$ _____ 200__
 \$ _____ 200__

Other _____

All gifts are deductible from income subject to tax, to the extent provided by law. Checks should be made out to the Delta Tau Delta Educational Foundation. Securities should be similarly assigned to the Foundation. If your gift is over \$250, please complete and include the order form for your brick in the Central Courtyard.

Name (Printed Please) _____

Signature _____

Date ____/____/____

"This will be OUR shelter. Just as we all have pride in our local chapters' shelters, this building will represent all of us. Alumni, staff, and undergraduates can all claim this as their own. Inside those walls will reside the heart and soul of our great fraternity. Our history can be found there to remind us of all of those who came before us and worked so hard to make our fraternity great. Our present will be working there. All of the ideals we hold so dear will be at work every day there to make our fraternity better. And, most importantly, our future will radiate from here. This headquarters will stand as the symbol of our future - strong and available for all to enter.

As I look at all the anniversaries we have coming up, I am reminded that this headquarters will represent and honor those events as well as honoring every Delt. I am so proud to be associated with an organization that has such a strong commitment to honoring all their members. Our new headquarters will be a beacon that draws all Deltas home, helps to guide our undergraduates on their journeys, and shines a light of inclusion for all future Deltas. I am proud to be a Delt and look forward to taking a journey to OUR new home."

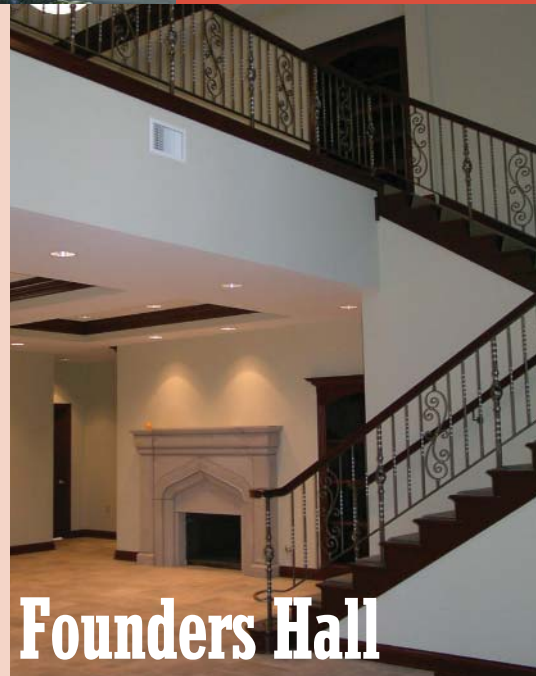
CARL BRANTLEY
SECOND VICE PRESIDENT
DELTA TAU DELTA
GEORGIA SOUTHERN, 1975

Please return your completed Letter of Intent to:

Kenneth A. File, President
 Delta Tau Delta Educational Foundation
 11711 N. Meridian, Suite 100
 Carmel, Indiana 46032

For more information, please contact Ken File at 317-818-3050 or via e-mail at ken.file@deltas.net

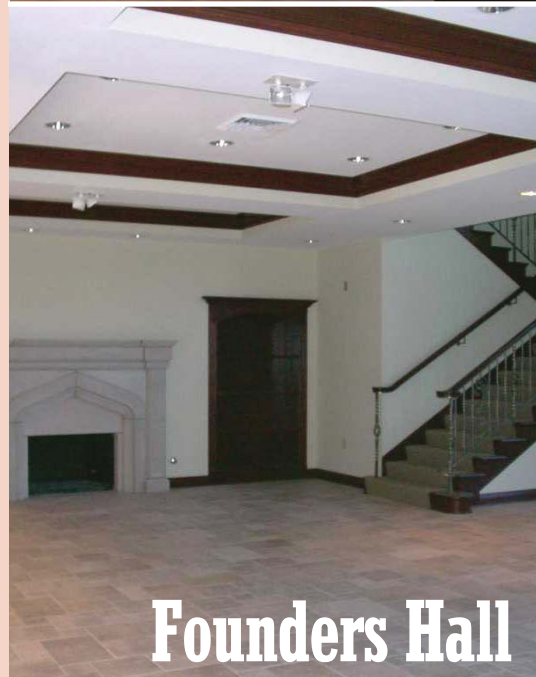
Leaving a Legacy



Founders Hall



Executive conference room



Founders Hall



Custom detail



“I can’t think of a more significant event in the life of Delta Tau Delta during this first year of the 21st century than securing our first permanent home we will occupy in 2002. Commendations to all who have made and will continue to make 10000 Allisonville Road the address we will remember for a long, long time.”

ROBERT E. ROUSH
INTERNATIONAL PRESIDENT
DELTA TAU DELTA
SAM HOUSTON STATE
UNIVERSITY, 1964

“Delta Tau Delta shares a great heritage with its chapters across the United States and Canada. Our ideals and principles are as relevant today as they were decades ago. Our alumni are proof that our Fraternity enhances lives by teaching leadership development, character, inspiring maturity and building brotherhood. If Delta Tau Delta is to remain competitive and provide the services to our chapters that we need over the next 50 years, we must seize this opportunity before it is lost.



Your International Headquarters will not only provide a comfortable and effective office from which to direct the day-to-day operations of the Fraternity, but it will also be a celebration of the Delt experience, capturing forever those moments that have made Delta Tau Delta one of the premiere Fraternities in North America—a place that will celebrate lives committed to excellence.

As we reflect on our 150 years, it is important to renew our commitment to the future of Delta Tau Delta. Remember that all of us have benefited from the work, sacrifice and generosity of those who have gone before us. We all enjoyed the comfort and fellowship provided by Delta Tau Delta during our undergraduate years.

We urge your thoughtful consideration of this proposed plan of action. Today, let’s provide Delta Tau Delta a permanent home; one built for Delts in a way that celebrates our history and meets the challenges of the future.”

— DAVID B. HUGHES, CAMPAIGN CHAIRMAN
OHIO WESLEYAN, 1961

I BELIEVE IN DELTA TAU DELTA for the education of youth and the inspiration of maturity, so that I may better learn and live the truth.
I BELIEVE IN DELTA TAU DELTA as a shrine of International brotherhood: her cornerstone friendship, her foundation conscience, her columns aspirations, her girders self-restraint, her doorway opportunity, her windows understanding, her buttresses loyalty, her strength the Everlasting Arms.
I BELIEVE IN DELTA TAU DELTA as an abiding influence to help me do my work, fulfill my obligations, maintain my self-respect, and bring about that happy life wherein I may truly love my fellow man, serve my country, and obey my God.



Contributions, stock assignments or transfers, and bequests should be designated to:

Delta Tau Delta Educational Foundation, Inc.

Delta Tau Delta Educational Foundation
11711 North Meridian Street, Suite 100
Carmel, Indiana 46032
Phone (317) 818-3050
Fax (317) 818-3060

Sample Inscriptions

DAVID L. NAGEL
GAMMA PI 1963

IN MEMORY OF
W. HAROLD BRENTON
GAMMA PI 1920

JOHN AND JANE
MARTIN
PARENTS

Central Courtyard

A PERMANENT PLACE IN DELT HISTORY
For a tax-deductible gift of only \$250 you, and those you honor, can forever be a part of Delta Tau Delta history.

NAME OF INDIVIDUAL ORDERING BRICK PHONE NUMBER

STREET ADDRESS

CITY STATE ZIP

CHAPTER (IF YOU ARE A DELT) GRADUATION YEAR

Please send acknowledgement of my honorary or memorial gift to:

NAME OF INDIVIDUAL TO RECEIVE ACKNOWLEDGEMENT

STREET ADDRESS

CITY STATE ZIP

Gift Payment

Total number of gifts/bricks ordered @ \$250 each

TOTAL AMOUNT DUE

My check for the total is enclosed (Make check payable to Delta Tau Delta Educational Foundation.)

Please charge my gift to
VISA MasterCard Expiration Date

Account Number

Signature

I prefer to make five equal payments of \$50, the first of which is enclosed. Please send second reminder on; third reminder on; fourth reminder on; and fifth reminder on.

Indicate how you would like your brick inscribed:

Grid for indicating how the brick should be inscribed, with three lines and 20 columns of boxes.

Be a part of Delt history

The Central Courtyard will become a permanent memorial to former and current alumni.

The Courtyard will be paved with bricks. Inscribed paving bricks may be purchased by individual donors. They will include the donor's name, his year of graduation and the chapter's Greek designation. Each person giving a gift of \$250 or more will have a brick inscribed and placed in the Courtyard of Honor as a part of his recognition package.

Imagine visiting the International Headquarters and seeing your name among the greats of our Fraternity. What a great way also to also honor a Delt father or grandfather, son, uncle, nephew, friend or pledge brother.

A limited number of spaces are available for each chapter, so order early. You will receive a letter of acknowledgement with the text of your inscription. Please return the brick reservation form with your gift today and be a part of Delt history!

You may make a gift on behalf of yourself, or in honor or memory of someone. Each beautifully inscribed brick will be personalized to your specification; three lines—with up to 18 characters per line, including spaces—are available. Engraving will include name, chapter and graduation year. For non-members, engraving may show name and connection with Delta Tau Delta. Please provide a suggestion.